

RAB27A Antibody (C-term)
Affinity Purified Rabbit Polyclonal Antibody (Pab)
Catalog # AP20264b**Specification**

RAB27A Antibody (C-term) - Product Information

Application	WB,E
Primary Accession	P51159
Other Accession	Q99P74 , Q99P58 , P23640 , Q4LE85 , Q9ERI2 , NP_004571.2
Reactivity	Human
Predicted	Mouse, Pig, Rat
Host	Rabbit
Clonality	Polyclonal
Isotype	Rabbit IgG
Antigen Region	136-164

RAB27A Antibody (C-term) - Additional Information**Gene ID** 5873**Other Names**

Ras-related protein Rab-27A, Rab-27, GTP-binding protein Ram, RAB27A, RAB27

Target/Specificity

This RAB27A antibody is generated from rabbits immunized with a KLH conjugated synthetic peptide between 136-164 amino acids from the C-terminal region of human RAB27A.

Dilution

WB~~1:1000

E~~Use at an assay dependent concentration.

Format

Purified polyclonal antibody supplied in PBS with 0.09% (W/V) sodium azide. This antibody is purified through a protein A column, followed by peptide affinity purification.

Storage

Maintain refrigerated at 2-8°C for up to 2 weeks. For long term storage store at -20°C in small aliquots to prevent freeze-thaw cycles.

Precautions

RAB27A Antibody (C-term) is for research use only and not for use in diagnostic or therapeutic procedures.

RAB27A Antibody (C-term) - Protein Information**Name** RAB27A

Synonyms RAB27

Function Small GTPase which cycles between active GTP-bound and inactive GDP-bound states. In its active state, binds to a variety of effector proteins to regulate homeostasis of late endocytic pathway, including endosomal positioning, maturation and secretion (PubMed:[30771381](#)). Plays a role in cytotoxic granule exocytosis in lymphocytes. Required for both granule maturation and granule docking and priming at the immunologic synapse.

Cellular Location

Membrane; Lipid-anchor. Melanosome. Late endosome. Lysosome. Note=Identified by mass spectrometry in melanosome fractions from stage I to stage IV (PubMed:12643545, PubMed:17081065). Localizes to endosomal exocytic vesicles (PubMed:17237785).

Tissue Location

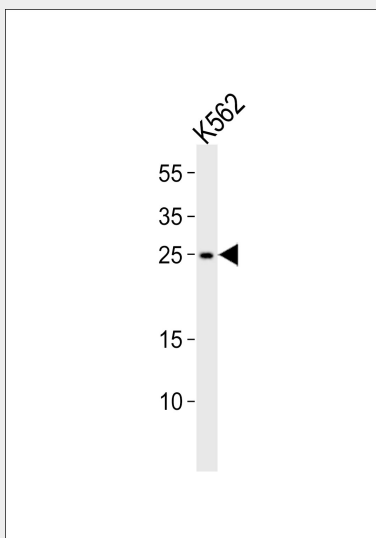
Found in all the examined tissues except in brain. Low expression was found in thymus, kidney, muscle and placenta Detected in melanocytes, and in most tumor cell lines examined Expressed in cytotoxic T-lymphocytes (CTL) and mast cells

RAB27A Antibody (C-term) - Protocols

Provided below are standard protocols that you may find useful for product applications.

- [Western Blot](#)
- [Blocking Peptides](#)
- [Dot Blot](#)
- [Immunohistochemistry](#)
- [Immunofluorescence](#)
- [Immunoprecipitation](#)
- [Flow Cytometry](#)
- [Cell Culture](#)

RAB27A Antibody (C-term) - Images



Western blot analysis of lysate from K562 cell line, using RAB27A Antibody (C-term)(Cat. #AP20264b). AP20264b was diluted at 1:1000. A goat anti-rabbit IgG H&L(HRP) at 1:10000 dilution was used as the secondary antibody. Lysate at 35ug.

RAB27A Antibody (C-term) - Background

The protein encoded by this gene belongs to the small GTPase superfamily, Rab family. The protein is membrane-bound and may be involved in protein transport and small GTPase mediated signal transduction. Mutations in this gene are associated with Griscelli syndrome type 2. Alternative splicing occurs at this locus and four transcript variants encoding the same protein have been identified.

RAB27A Antibody (C-term) - References

Ohbayashi, N., et al. Pigment Cell Melanoma Res 23(3):365-374(2010)
Davila, S., et al. Genes Immun. 11(3):232-238(2010)
Meeths, M., et al. Pediatr Blood Cancer 54(4):563-572(2010)
Chattopadhyay, I., et al. Mutat. Res. 696(2):130-138(2010)
Wood, S.M., et al. Blood 114(19):4117-4127(2009)